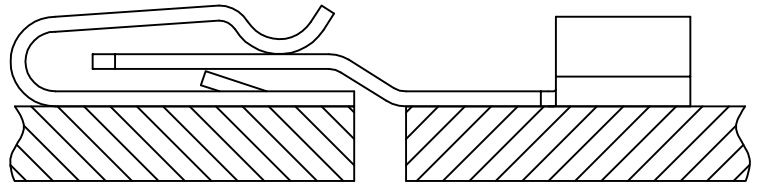
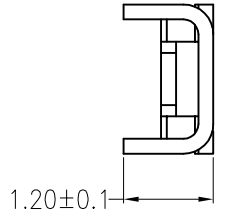
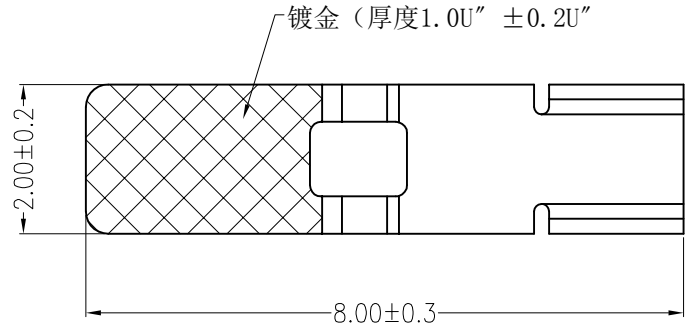


REV	DESCRIPTION	DESIGN	DATE
A0	Release	吴丹平	2016.04.30

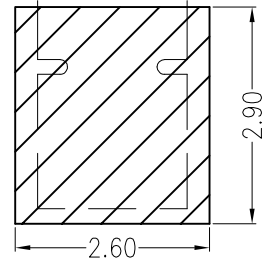
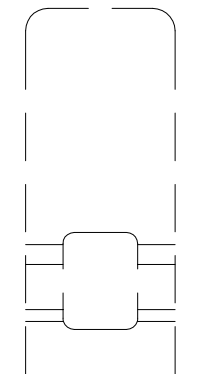
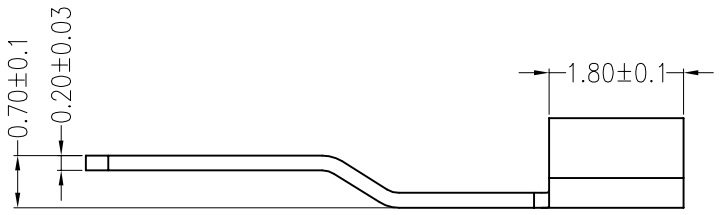
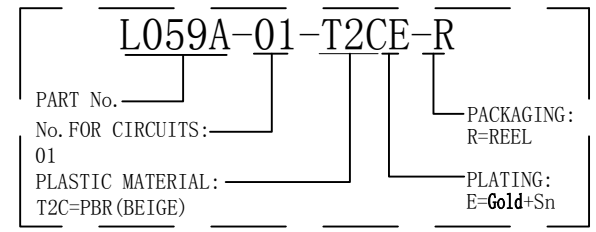


Assembly Layout

主要技术参数 Main Specifications

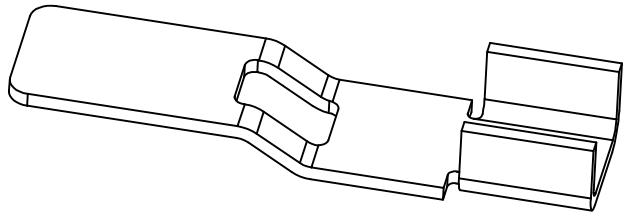
- 线数 (Poles): 01
- 接触电阻 (Contact resistance): $\leq 20m\Omega$
- 绝缘电阻 (Insulation resistance): $\geq 800M\Omega$
- 额定电压 (Rated voltage): 250 V AC DC
- 额定电流 (Rated current): 3.0A AC DC
- 耐电压 (Withstand Voltage): 1500V AC/minute
- 温度范围 (Temperature Range): $-45^{\circ}C \sim +125^{\circ}C$

ORDER INFORMATION:



Board Layout

General Tolerance: ± 0.05



ITEM	COMPONENT	Q'TY	MATERIAL	FINISH
A	CONTACT	1 PCS	PhosphorBronze	Gold+Sn-plated

JKUN 温州健坤接插件有限公司
WENZHOU JKUN CONNECTOR CO., LTD.

TITLE: -
PART NO.: L059A-01-T2CE-R

X.±0.5	X.±5'	USE: CUSTOMER APPD: 邵敬和 CHKD: 田峰 DR: 蒋建银
.X±0.3	.X±2'	
.XX±0.25	.XX±1'	
--	--	

UNITS: mm	SCALE: 1 : 1
	SHEET: 1 / 1

A

B

C

D

E

F

1

2

3

4

5

A

B

C

D

E

F